

GMINA RAWICZ

Invest in Rawicz





Why it is worth investing in Rawicz?

Inhabitants of Rawicz Municipality are enterprising and industrious. Their feature is reliability, a feature of which Wielkopolskie Voivodeship is famous for. Together with great location – on a direct route between Poznań and Wrocław – Rawicz Municipality is an amazing manufacturing and logistics base. In order to meet investor's requirements, we have prepared an offer providing major information about Rawicz Municipality. Our advantages are: wide offer of investment areas, excellent location and high quality of investor service.

We kindly invite and encourage you to invest in Rawicz Municipality!

Gregorz Kubiś
Mayor of Rawicz Municipality



R A W I C Z ' S M A I N A D V A N T A G E S

Perfect location

direct access to express roads

Great condition

of infrastructure

Impressive

cultural and sports offer

Easy access to the airports:

Wrocław, Poznań

Qualified workers,

who are interested in taking up a job

Wide educational offer

for children, teenagers and adults

shooting range, swimming pool, athletic stadium, speedway stadium, professional hammer throw point, sports hall, multifunctional sports fields, football stadiums, skatepark, mini-sledding track.



As the only municipality
in the poviát we have
AN INVESTOR SERVICE OFFICE





EXCEPTIONAL CITY

By urban planners, the biggest and the most representative implementation in Wielkopolskie Voivodeship, after 1500.

Rawicz, a town in Wielkopolskie Voivodeship. It is a natural service and industrial center with a unique architectural layout. The city is a leader in creating a favorable business-related reality.

At this moment, the leading industries are: metal, wood, food and fuel.

Before: craft traditions.

In the last years of the eighteenth century Rawicz took first place among the centers of Wielkopolska weaving cloth, then he was considered the leader in the meat industry. In the first half of the nineteenth century can be seen as the beginning of development of the industry in Rawicz. The main facility was a factory of cigars and tobacco, famous throughout the Duchy of its products.

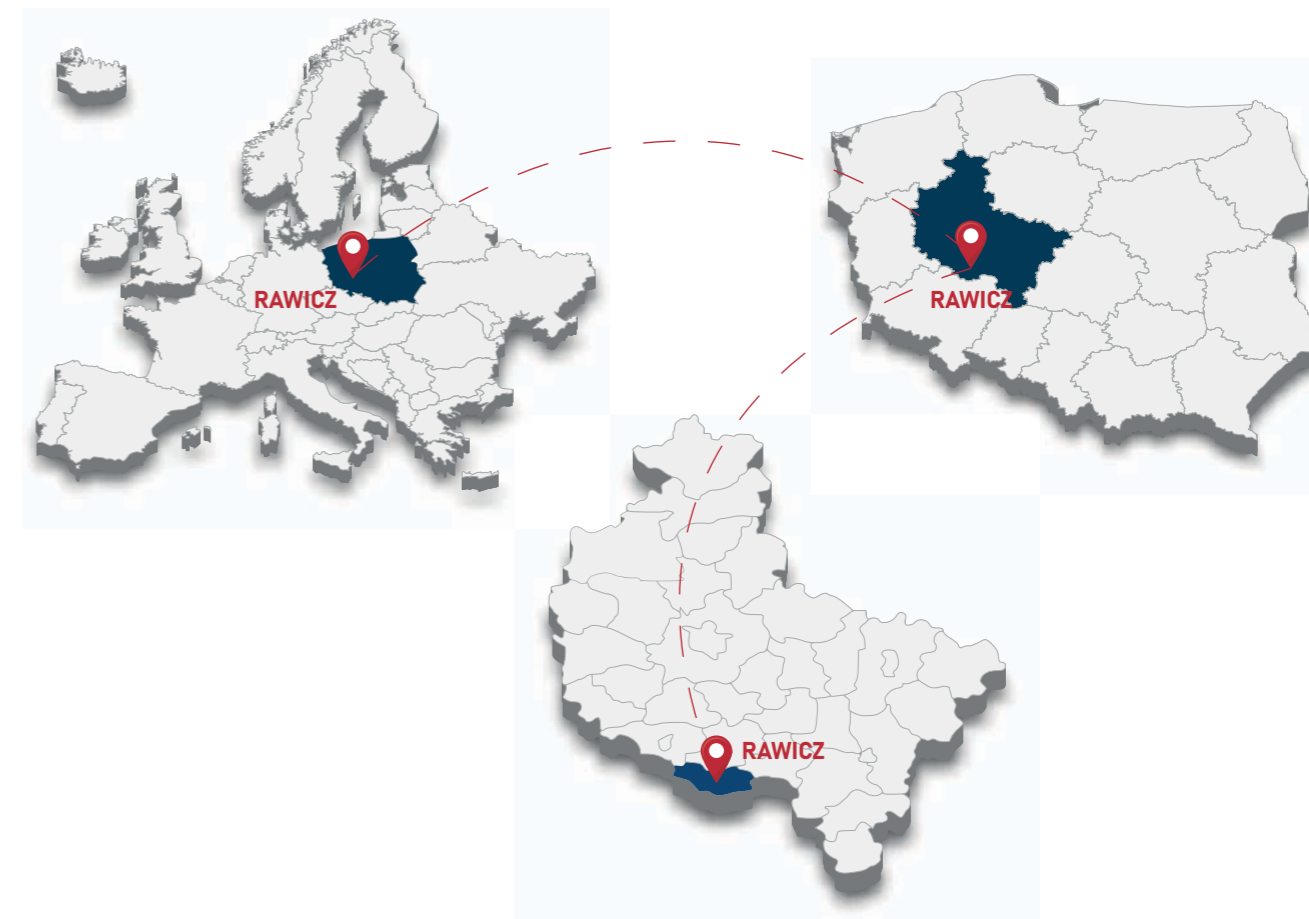
Rawicz municipality covers an area of 133,64 km², while town of Rawicz itself 7,81 km².

There are approximately 30 200 citizens of Rawicz municipality and 20 500 of Rawicz town itself.

Moreover, Rawicz municipality consists of 22 dynamically developing villages.



LOCATION



Rawicz, a city in Wielkopolska Voivodeship, in the Rawicki Powiat, located at the interface between Wielkopolska Voivodeship (Greater Poland) and Dolnośląskie Voivodeship (Lower Silesia). With this great location at S5, the city is a natural service and industrial center with a rich offer of financial institutions and a leader in creating favorable business-related reality.

P E R F E C T L O C A T I O N



MACRO

There is a comparable, small distance between us and the three nearest capitals:

RAWICZ-BERLIN	4h 20 min/365 km
RAWICZ-PRAGA	4h 30 min/346 km
RAWICZ-WARSZAWA	4h 25 min/405 km

MICRO

RAWICZ-ZIELONA GÓRA	1h 50 min/127 km
RAWICZ-WROCŁAW	0h 35 min/65 km
RAWICZ-KALISZ	1h 40 min/98 km
RAWICZ-POZNAŃ	1h 20 min/121 km

ŚWINOUJŚCIE	KOŁOBRZEG	GDAŃSK
5h 10 min 419 km	5h 20 min 451 km	4h 50 min 413 km



S5 expressway and national road DK36 intersect in Rawicz commune



There is only 35 min from Rawicz to Wrocław (near A4 motorway), 1h 20 min to Poznań (near A2 motorway) and only 2h to Zielona Góra (near S3 espressway)



Nearest province capital: Wrocław – ca. 35 min



Travel to the nearest airport, Wrocław Strachowice, lasts only 40 min, whereas to Poznań airport – 1h 30 min



The international railway line E 59 (Wrocław-Poznań) passes through Rawicz; the railway siding is available



The nearest river ports: Wrocław, Poznań, Gorzów Wielkopolski and Malczyce



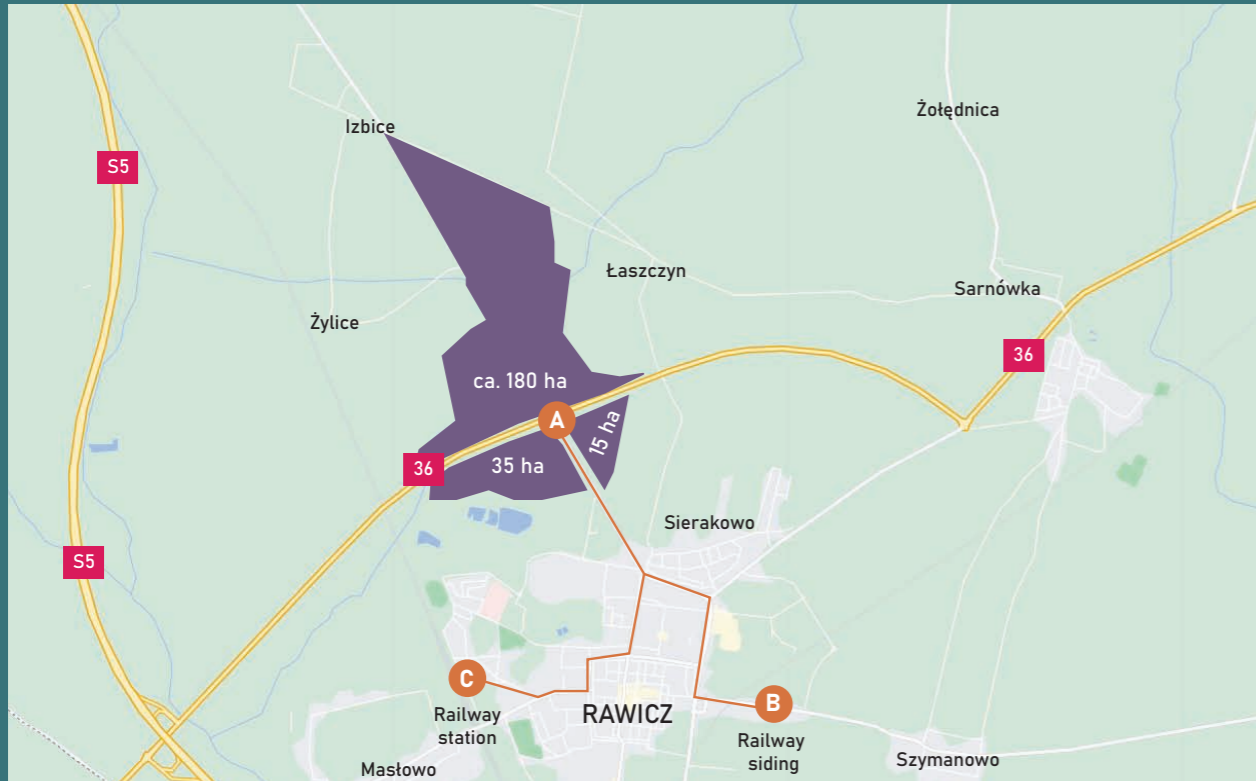
Rawicz is located in southwestern part of Wielkopolskie Voivodeship





INVESTMENT AREAS

230 ha - EXCELLENT COMMUNICATED ECONOMIC ZONE



A Direct access from S5 expressway, ca. 3 min from the zone

B Railway siding - Rawicz East, ul. Kamińskiego, ca. 8 min from the zone

C Railway station: ul. Dworcowa - ca. 7 min from the zone. The international railway line E 59 (Wrocław-Poznań) passes through Rawicz.

INVESTMENT AREA „ŁASZCZYN ZACHÓD”

Complex I
- ca. 180 ha of free land intended for production, warehouses and logistics

Land specification:

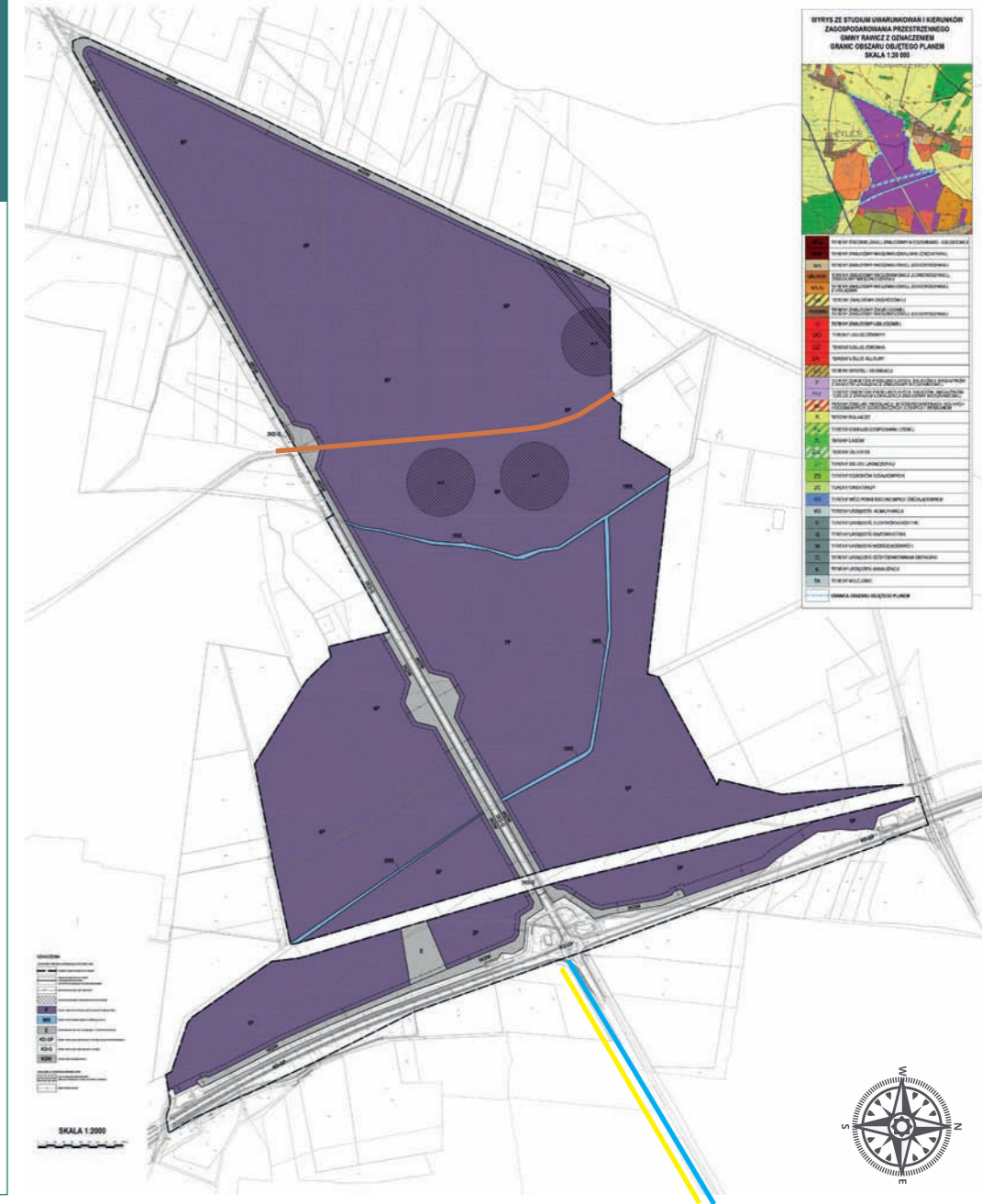
- Building height limit [m]: 40
- Construction height limit [m]: 49
- Building coverage [%]: 70
- Biologically active area [%]: 10

Potential obstacles:

- GAS PIPELINE
- ARCHAEOLOGICAL SITES
- WATERCOURSES

Media:

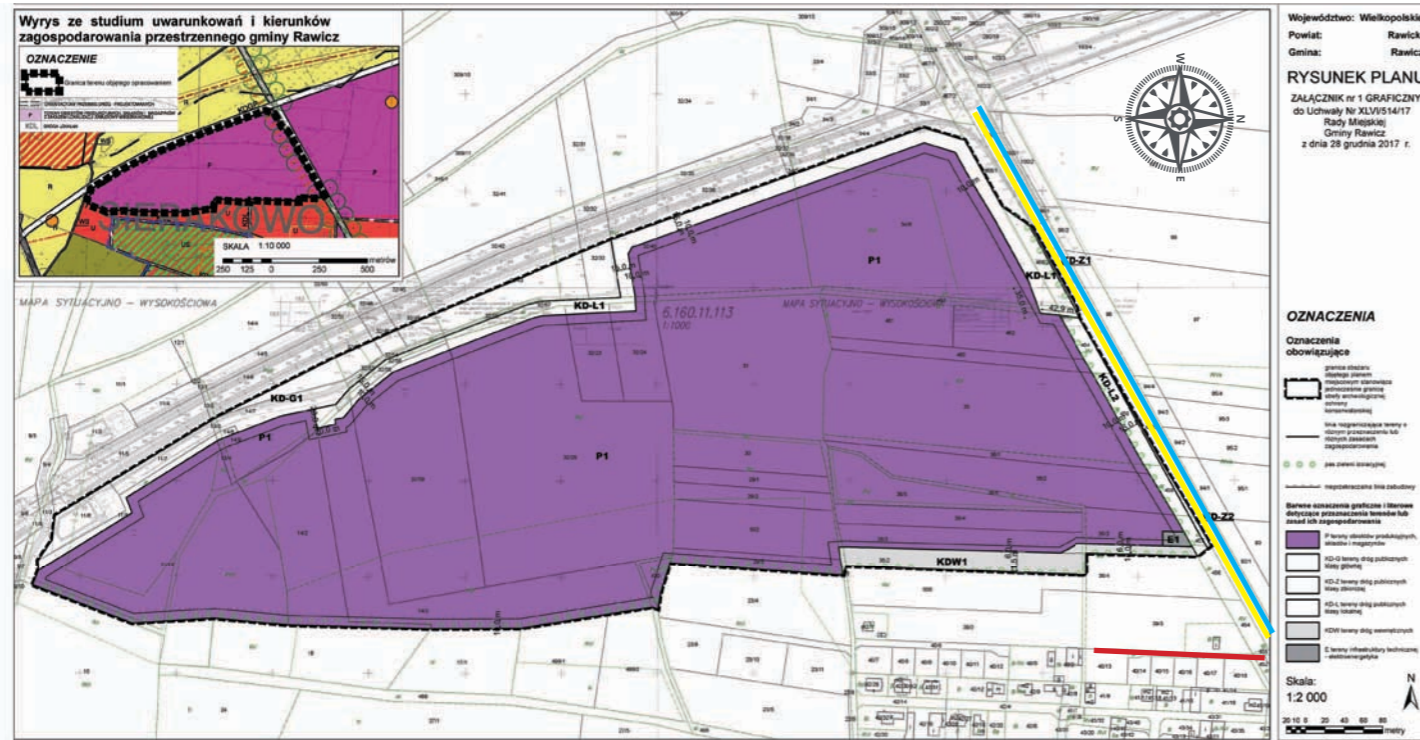
- POWER LINE
*ca. 650 m from the boundary of the zone - to 1,5 MW.
* more than 1,5 MW - Main Supply Point: ca. 3000 m from the boundary of the zone.
* Ensuring operator - up to 50 MW from the planned 110 kV line.
- WATER
ca. 100 m from the boundary of the zone. Available capacity - 20 m³/h.
- SEWAGE
ca. 100 m from the boundary of the zone. Available capacity - 75 m³/h.
- GAS
within the zone. Available capacity: 2000-3000 m³/h





INVESTMENT AREA „Łaszczyn Zachód”

INVESTMENT AREA „SIERAKOWO PN I”



Complex II
- ca. 35 ha
of free land
intended for
production,
warehouses
and logistics

Land specification:

Building height
limit[m]: 25
Construction height
limit [m]: 25
Building coverage
[%]: 65
Biologically active
area [%]: 10

Potential obstacles:

N

Media:

POWER LINE
* ca. 150 m from the boundary of the zone – to 1,5 MW.
* more than 1,5 MW – Main Supply Point: ca. 2500 m from the boundary of the zone.
* Ensuring operator - up to 50 MW

WATER
near the zone. Available capacity – 20 m³/h

SEWAGE
near the zone. Available capacity – 75 m³/h

GAS
ca. 500 m from the boundary of the zone. Available capacity.
2000-3000 m³/h.

INVESTMENT AREA „Sierakowo Pn I”

INVESTMENT AREA „SIERAKOWO PN II”

Complex III
- ca. 15 ha of free land intended for production, warehouses and logistics

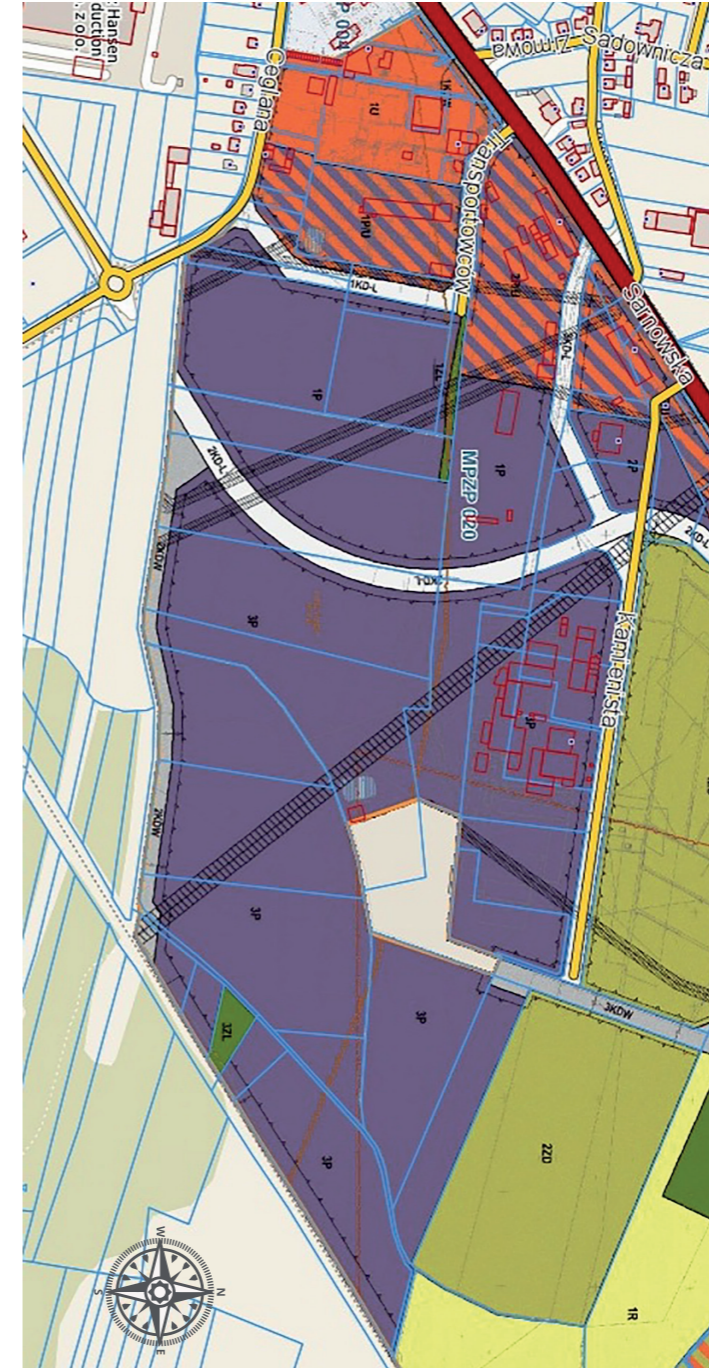
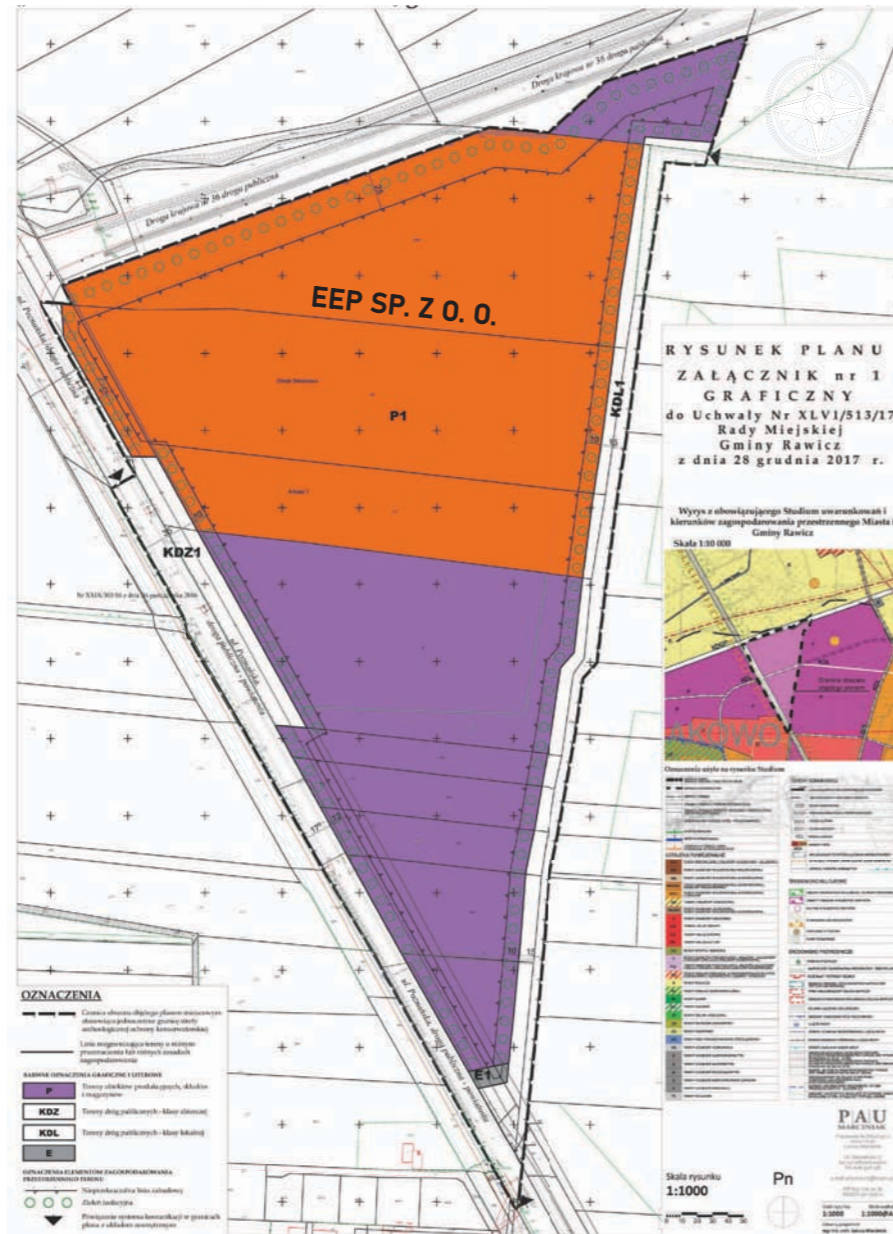
Land specification:

Building height limit [m]: 25
Construction height limit [m]: 25
Building coverage [%]: 65
Biologically active area [%]: 10

Potential obstacles: N

Media:

- POWER LINE
* ca. 150 m from the boundary of the zone – to 1,5 MW.
* more than 1,5 MW – Main Supply Point: ca. 2200 m from the boundary of the zone.
* Ensuring operator – up to 50 MW
- WATER
near the zone. Available capacity – 20 m³/h
- SEWAGE
near the zone. Available capacity – 75 m³/h
- GAS
ca. 500 m from the boundary of the zone. Available capacity: 2000-3000 m³/h



INVESTMENT AREA „RAWICZ ZACHÓD - SARNOWA”

Complex IV
- ca. 41 ha of free land intended for production, warehouses and logistics

Land specification:

Building height limit [m]: 25
Construction height limit [m]: 25
Building coverage [%]: 65
Biologically active area [%]: 10

Potential obstacles:

Power lines

Media:

- POWER LINE
* within the zone – to 1,5 MW.
* more than 1,5 MW – Main Supply Point: ca. 150 m from the boundary of the zone.
- WATER
within the zone. Available capacity – 20 m³/h
- SEWAGE
within the zone. Available capacity – 75 m³/h
- GAS
within the zone. Available capacity: 300 m³/h



**PROPERTY TAX EXEMPTION DUE TO NEWLY BUILT BUILDINGS
(DE MINIMIS AID):**

RAWICZ GMINA COUNCIL ACT NO. XLI/336/14 OF FEBRUARY 26, 2014

EXEMPTION TIME

2 years

CONDITIONS

basic condition is to build a new building, where the business activity will be conducted

it is necessary to apply within 14 days after completing the investment

EXEMPTION DOES NOT INCLUDE

buildings related to the commercial activity and filling stations

MAXIMUM AMOUNT OF THE AID

200.000 euro



**PROPERTY TAX EXEMPTION DUE TO THE NEW INVESTMENT
(DE MINIMIS AID):**

RAWICZ GMINA COUNCIL ACT NO. XXXV/368/17 OF FEBRUARY 14, 2017

EXEMPTION TIME:

up to 24 months. That period begins at the first day of the month following the one, when the investment was started (i.e. when the building permit decision became final) and ends at the end of the month, when investment was completed (i.e. when the occupancy permit decision was final)

CONDITIONS

exemption includes undeveloped lands, devoted to the business activity, owned by an entrepreneur who is to start a new investment there. Exemption covers solely those plots of land, which are enlisted in building permit decision, regarding new investment. It is necessary to apply for the tax exemption within 14 day from the start of the investment

EXEMPTION DOES NOT INCLUDE

lands, where there is realized an investment of construction the following:

buildings or structures, related to commercial activity

buildings or structures, related to filling stations

buildings or structures, related to logistic and freight forwarding

residential ones

MAXIMUM AMOUNT OF THE AID

200.000 euro

E D U C A T I O N A L O F F E R

EDUCATION PROFILES

I Liceum Ogólnokształcące in Rawicz (secondary school)

Zespół Szkół Zawodowych in Rawicz (professional technical school)

Zespół Szkół Przyrodniczo-Technicznych Centrum Kształcenia Ustawicznego w Bojanowie (professional technical school)

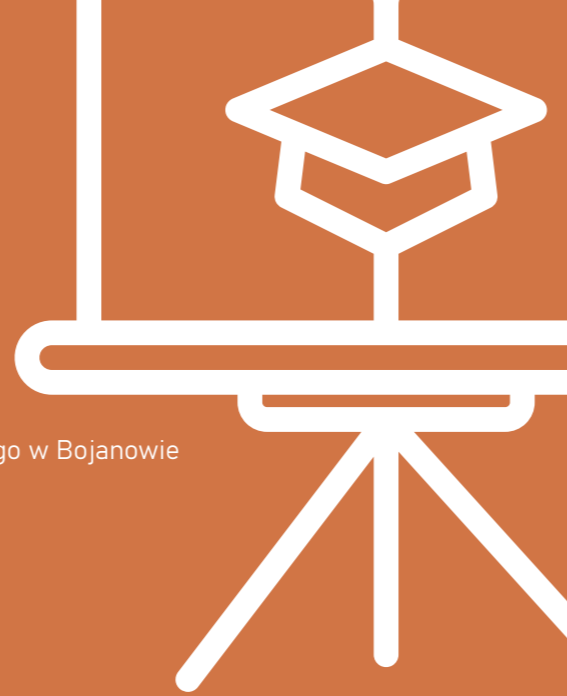
Szkoły Branżowe I Stopnia in Rawicz and Bojanowo (branch schools)

Zespół Szkół im. Jana Pawła II w Rawiczu (primary school, vocational school for students with special needs)

EDUCATION OFFER FOR ADULTS

Zespół Szkół Przyrodniczo-Technicznych CKU in Bojanowo (professional technical school)

Zespół Szkół Zawodowych in Rawicz (professional technical school)



Wide educational offer

for children, teenagers and adults

– childminder, nursery (taking care of children up to the age of 3), 4 state kindergartens, 8 non-public kindergartens, 5 primary schools with kindergarten units, 8 primary schools, as well as 5 secondary and vocational schools. According to the newest education offer of Rawicz commune, there are also bilingual classes in primary school.



H A V E A L R E A D Y I N V E S T E D
J O I N U S !

7TECHNOLOGY SP. Z O.O.



Profile:
activities related to IT consulting

Company motto:
„Algorithms of success, expressed in the mission, as providing comprehensive IT services, improving the flow and management of knowledge in organizations, maximizing the efficiency of all processes and leading companies to market success”

Employment rate: 46 people + 20 people outsourcing

Establishment date: 2011

Customers: i.a. PKM DUDA / GOBARTO, LOREAL POLSKA, MERCEDES-BENZ POLSKA, T-SYSTEMS [Grupa T-MOBILE], DELLOTE, DIAMANT (PFFIER&LANGEN), WÓJCIK, RADIO ZET [EUROZET], DUDA-CARS, JEEGER, DUDA HOLDING, POLSKI PRĄD S.A., GAS CONTROLS, W. LEGUTKO, RAWIBOX, RAWIMET

Contact:
tel. +48 65 615 78 00
e-mail: info@7technology.pl
www.7technology.pl

A&T ENERGIA SP. Z O.O.



Industry:
design and construction services

Production:
social container, office container and special container as well as container for Constructs and produces customised stream aggregates, soundproofing, ventilation

Main product:
soundproofing and steel constructions

Company employs: 3 workers

Establishment date: 2010

Sample projects: Data Center Deutsche Telekom, Data Center Bank Santander in Spain

Contact:
tel. +48 667 538 102
e-mail: biuroat@at-energia.eu
www.at-energia.eu

AMIT LOGISTICS Sp. z o.o. sp. k.



Industry:
transport

Business profile:
domestic and international transport. transport to all European countries. Cooperation with producers of goods, freight forwarding, small and large companies. They have the appropriate experience, database and knowledge to organize the transport of each shipment to all European countries. They deal with the export and import of goods, but also transport of goods on all international routes.

Company employs: 45 workers

Establishment date: early 80s

Contact:
tel. +48 65 545-39-39
e-mail: biuro@amitlogistics.pl
www.amitlogistics.pl

BODE RAWAG SP. Z O.O.



Industry:
production of a wide range of products for rail and road vehicles

Production:
the company is a producer of modern equipment for passenger carriages, carriage sets EMU/EDU, trams, rail vehicles, buses and boats

Company employs: 560 workers

Establishment date: 1970

RAWAG collaborates with, i.a., Bode, Bombardier, Siemens, Newag, PKP Intercity, Alstom, Przewozy Regionalne, Solaris, Pesa, H. Cegielski Poznań S.A. or Stadler

Contact:
tel. +48 65 546 2424
e-mail: dyrekcja@rawag.pl
www.rawag.pl

BRACIA KOWALSCY ROBERT KOWALSKI,
KAROL KOWALSKI „STOLARSTWO” SP. J.



Industry:
carpentry - wood

Production:
external and internal woodwork as well as shop windows. Company provides also design service of conservatories, equipped with the newest ventilation and radiation regulation systems, stairs. Accessories: window-sills, shutters, stained glass elements, door handles, maintenance

Main product: windows, external and internal doors

Company employs: 100 workers

Establishment date: 1934

Sample projects: historic buildings and large structures implemented also in Germany: Alte Meiersche Gummi-Fabrik Kontorhaus, Alte Meiersche Neubau Appartementhaus Berlin-Weissensee, but also tenement house from 1855. Bergstr 61 Berlin, building of old chemistry at the University of Greifswald

Contact:
tel. +48 65 546 17 05
e-mail: biuro@kowalscy.pl
www.kowalscy.pl

FABRYKA PAPIERU RAWIBOX S.A.



Industry:
paper

Production:
single faced cardboard, double faced cardboard, folded boxes, trays, die-cut packaging, boxes with automatic and semi-automatic bottom, american boxes, reinforcements, cardboard dividers, sheets and equipment of the boxes. Nowadays, RAWIBOX is the only company in Poland, equipped with flexographic printing machine, able to print up to 7 colours

Main product:
corrugated cardboard in various grammage and with various covering and in production of coloured corrugated cardboard packagings

Company employs: 140 workers

Establishment date: 1902

Contact:
tel. +48 65 546 03 00
e-mail: rawibox@rawibox.com.pl
www.rawibox.com.pl

cGAS controls Sp. z o.o.



Industry:
gas

Product Groups:
systems for automatic controlling of gas installations and gas facilities, equipment and systems for measuring gas quantity and quality, gas regulating and measuring stations, cut-off and relief valve systems, pig launchers/receivers, filters, dust and liquid separators, pressure and non-pressure tanks, heat exchangers, odorizing systems, odorant distribution, biogas conditioning technologies, CNG filling technologies

Company employs: 21 workers

Establishment date: 2011

Contact:
tel. +48 65 545 56 02
e-mail: info@cgas.pl
www.cgas.pl

GAZOMET SP. Z O.O.



Industry:
gas

Mission of the company:
provides solutions for the whole gas supply chain – mining, transmission, storage, distribution and use

Company employs: ca. 130 workers

Establishment date: 1954

GAZOMET's products are available internationally, e.g. in Germany, Great Britain, Denmark, Russia, Latvia, Lithuania, Belarus and even Kazakhstan

Contact:
tel. +48 65 545 02 00
e-mail: marketing@gazomet.pl
www.gazomet.pl

Fermy Drobiu Woźniak Sp. z o.o.



Industry:
food, production of consumer eggs

Production:
the company is a leader in national production and one of the largest producer of consumer eggs in Europe. They offer barn, free range and cage farming. They purchase grain and transport services.

Company employs: 1200 workers

Establishment date: 1986

Contact:
tel. +48 65 546 84 00
e-mail: biuro@fdw.pl
www.fdw.pl

FERRPOL Bracia Matuszewscy



Industry:
provides services in mechanical processing and production of gas safety systems

Production:
the company supplies parts for automotive, machine construction, hydraulic, agricultural, construction and railway industries

Company employs: 170 workers

Establishment date: 1956

Ferrpol's products are delivered to: Germany and Switzerland.

Contact:
tel. +48 65 545 32 16
e-mail: ferrpol@ferrpol.com.pl
www.ferrpol.com.pl

FRITZ HANSEN PRODUCTION SP. Z O.O.



Industry:
furniture

Production:
exclusive chairs and upholstered furniture

Main product:
production of furniture from laminated

Designers, among others: Hans Sandgren Jakobsen, Henning Larsen and Nicholai Wiig Hansen

Company employs: 100 workers

Establishment date: 1872 Denmark. In Rawicz: 2013.

Sample projects: The Maritime Museum in Helsingør (Denmark), The National Arts Center in Tokyo, and Copenhagen Airport (Denmark)

Contact:
tel. +48 512 988 878
e-mail: sekr@fritzhanzen.com
www.fritzhanzen.com

GRUPA PIEPRZYK



Company operates in many industries:
fuel and energy,
agriculture,
metalworking,
hotels and restaurants,
wood,
motorization,
advertising
and home electronics equipment

Main industry:
fuel

Company employs: 1500 workers

Establishment date: 1989

Company cooperates with: PKN ORLEN S.A., LOTOS S.A. Group, BP Polska Sp. z o.o., Volkswagen A.G., Müller Sachsem GMBH and Shell Polska

Contact:
tel. +48 65 546 12 51
e-mail: biuro@pieprzyk.pl
www.pieprzyk.pl

HENGST FILTER POLSKA



Industry:
automotive

Production:
multi functional filtration and fluid management systems, car filter cartridges, oil filters, air filters, fuel filters and cabin air filters

Company employs: 200 workers

Establishment date: 2019

Contact:
tel. +48 65 619 71 00
www.hengst.com

HURST - SUFITY NAPINANE



Industry:
design, general construction, development

Business profile:
Hurst Ceilings - design, production and assembly of aluminum and steel structures, delivery and installation of stretch ceiling systems.

Hurst Projects - design, cost estimation, general contracting and full supervision over the investment.

Hurst Developer - construction and sale of residential buildings in the Rawicz Commune.

Company employs: 25 people + 70 people outsourcing

Establishment date: 2010

Contact:
tel. +48 785 719 138
e-mail: sufity@hurst.pl
www.hurst.pl

LAKIERNICTWO SIERAKOWSCY SP. Z O.O. SP.K.



Industry:
varnishing

Specialization:
comprehensive wet painting of elements for the railway, automotive and broadly understood industry

Mission of the company:
„Provision of comprehensive services in the field of industrial varnishing, being known for professionalism, innovation and customer care”

Company employs: 35 workers

Establishment date: 1965

Company have a customers the European Union countries

Contact:
tel. +48 65 545 28 73
e-mail: kontakt@lakiernictwo-sierakowski.pl
www.nowa.lakiernictwo-sierakowski.pl

MAD Dawid Maćkowiak



Industry:
wood

Business profile:
manufacturer of wooden floors.

The company's specialty is hand-finished oak floors

Company employs: 10 workers

Establishment date: 2013

Contact:
tel. +48 509 939 586
e-mail: biuro@mad-podlogi.pl
www.mad-podlogi.pl

MIKOR TARTAK – MATERIAŁY BUDOWLANE KiL Mikołajczyk



Industry:
wood

Main activity profile:
pallets and custom-made wooden packaging.

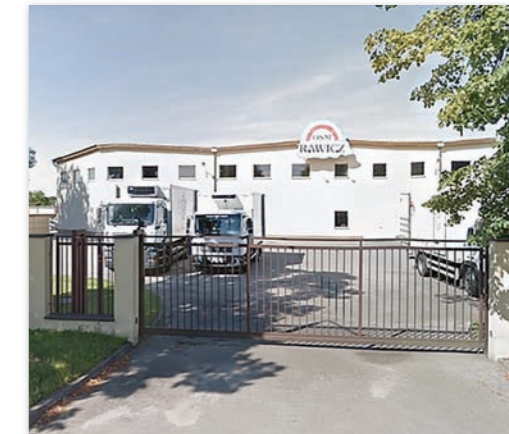
Additionally:
firewood, boards, beams and roof trusses

Company employs: 5 workers

Establishment date: 2017

Contact:
tel. +48 601 239 280
e-mail: mb.mikor@wp.pl

OKRĘGOWA SPÓŁDZIELNIA MLECZARSKA



Industry:
food

Business profile:
production of dairy products

Leading products:
milk, cream, dairy drinks, yogurt, cottage cheese, fried cheese and butter

Company employs: 100 workers

Establishment date: 1887

Contact:
tel. +48 65 545 05 00
e-mail: osm.rawicz.handel@gmail.com
www.osm-rawicz.pl

PZPH PAGMER Zbigniew Chorzępa



Industry:
metal

Business profile:
machining on numerically controlled lathes and machining centers, turning, milling, drilling, threading and cutting of iron, steel, aluminum or plastic parts

Company employs: 25 workers

Establishment date: 1985

The company provides parts for the automotive, railway, hydraulic and machine industries for the local and foreign market

Contact:
tel. +48 65 545 35 58
e-mail: biuro@pagmer.com.pl
www.pagmer.pl

PPH UBÓJ I PRZETWÓRSTWO INDYKA
JOANNA GIŻEWSKA-CHRZĄSZCZ



Industry:
food

Business profile:
slaughtering, cutting and processing of turkey along with the confectioning of meat and sausages

Company employs: 350 workers

Establishment date: 1982

Every day, company cars reach customers from all over Poland. Company also distributes products to European Union countries

Contact:
tel. +48 65 545 14 23, 65 546 91 54-57
e-mail: gizewski@gizewski.pl
www.gizewski.pl

PPUH EXPORT-IMPORT ROMAN KUBINKA



Industry:
wood

Production:
cremation coffins, pine, oak and poplar

Production volume:
ca. 13.000 coffins a month

Company employs: 160 workers

Establishment date: 1987

Company produces coffins of high quality, which are delivered mainly to Germany, but also to Czech Republic, the Netherlands and England

Contact:
tel. +48 65 572 10 37
e-mail: kubinka@kubinka.com.pl
www.kubinka.com.pl

PW WEINERT ZAKŁAD STOLARSKI – TARTAK
EXPORT - IMPORT



Industry:
carpentry - wood

Production:
coffins from solid pine wood

Production volume:
ca. 7.000 coffins a month

Company employs: 50 workers

Establishment date: 2010

99% of company's products is delivered to Germany

Contact:
tel. +48 65 545 28 39
e-mail: weinertstolarnia@wp.pl

RAWBUD – RAWICZ SP. Z O.O.



Industry:
construction

Business profile:
construction production and widely understood construction services along with the sale of apartments. An additional activity is the production of road signs

Company employs: 180 workers

Establishment date: 1998

Contact:
tel. +48 65 546 10 86
e-mail: rawbud@rawbud.com.pl
www.rawbud.pl

RAWI MET Sp. z o. o.



Industry:
metal

About company:
the company operate in the steel constructions market, manufacture specialist, highly processed and large-size steel constructions for the construction industry, power industry, highway engineering and cement industry. It also produce mobile concrete mix and asphalt plants.

Services:
CNC 3D plasma and gas cutting, sheet metal rolling, bending and straightening, welding, Sandblasting of the structures, painting.

Company employs: 68 workers

Establishment date: 2006

Contact:
tel. +48 65 615 7050
e-mail: biuro@rawimet.pl
www.rawimet.pl

ZPB KACZMAREK SP. Z O. O. SP.K.



Industry:
construction

Business profile:
concrete precast products and sanitary and water wells. ZPB KACZMAREK, as one of the first companies worldwide, offers products produced according to the newest production system, i.e. PERFECT

Company employs: 200 workers

Establishment date: 1983

Company's products are also delivered to Slovakia

Contact:
tel. +48 65 546 71 40
e-mail: rawicz@zpbkaczmarek.pl
www.zpbkaczmarek.pl

RAWICZ FAMILY BAKERIES



P.P.H.U. Piekarnia-Ciastkarnia J.P. Kortylewscy, A. Danek
Establishment date: 1910
Tel.: +48 65 545 12 24
E-mail: piekarnia.kortylewscy@o2.pl



„Michalczak” Adriana Michalczak
Establishment date: 1999
Tel.: +48 65 545 10 50 / 885 262 885
E-mail: piekarniamichalczak@wp.pl
www.piekarniamichalczak.pl



Cukiernia „ANNA” – firma Skupin
Establishment date: 1945
Tel.: +48 65 545-10-45
E-mail: annacukiernia@wp.pl
www.cukiernia-anna.eu

INTERNATIONAL COOPERATION



STRAKONICE (CZECH REPUBLIC)

International contacts and cooperation provide excellent opportunities to exchange good practices. Keeping relations with partner cities allows for the implementation of assumptions related to cultural, economic, educational and



ATTENDORN (GERMANY)

information exchange in all respects and building a civil society.

We have excellent business relations with the German city of Attendorn. We started economic cooperation in 2020.

INVESTOR SERVICE OFFICE



Julita Augustyniak
Manager, Investor Service Office

tel. +48 65 616 49 88 /409
mob. 502 285 876
e-mail: j.augustyniak@rawicz.eu
inwestor@rawicz.eu



Joanna Popielarz
Project Manager

tel. (+48) 65 616 49 88 /409
e-mail: j.popielarz@rawicz.eu
inwestor@rawicz.eu

Most important tasks:

- We provide support with administrative procedures: from the inquiry to the end of the procedure.
- Promotion in our schools. Facilitating contact with career counselors.
- Constant cooperation with companies.
- Assistance in searching for reliable partners for foreign exports by establishing the Investor's contact with PAIH's Foreign Trade Offices.
- Promote investors in promotional materials on: www.rawicz.pl.

